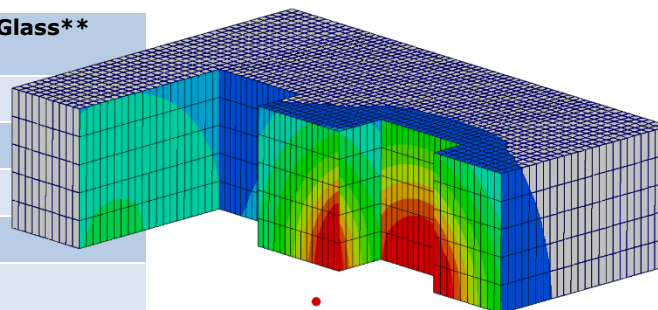


Explosive resistance – Doors and Windows

Classification code*	Minimum values (test criteria)	Classification code Glass** (test size 90x110cm)
EPR1	50 KPa / 370 kPa-msec	ER1
EPR2	100 KPa / 900 kPa-msec	ER2
EPR3	150 KPa / 1500 kPa-msec	ER3
EPR4	200 KPa / 2200 kPa-msec	ER4



*See EN13123 - Classification as splinter (S) or as no splinter (NS)
 **See EN13541 - Classification as splinter (S) or as no splinter (NS)

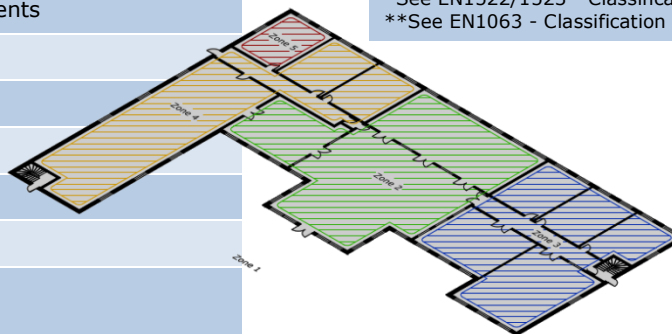
Bullet resistance – Doors and Windows

Classification code*	Protection (calibre/weapon)	Classification code Glass**
FB1	.22 LR	BR1
FB2	9mm Parabellum	BR2
FB3	.357 Magnum	BR3
FB4	.44 Magnum	BR4
FB5	5.56x45 NATO	BR5
FB6	7.62x51 NATO	BR6
FB7	7.62x51 NATO AP	BR7

*See EN1522/1523 - Classification as splinter (S) or as no splinter (NS)
 **See EN1063 - Classification as splinter (S) or as no splinter (NS)

Burglar resistance – Doors and Windows

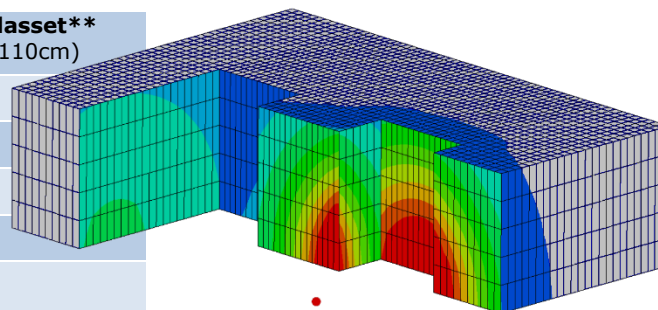
Classification code*	Resistance time**	Classification code Glass***
RC1 N	-	No requirements
RC2 N	3 min	No requirements
RC2	3 min	P4 A
RC3	5 min	P5 A
RC4	10 min	P6 B
RC5	15 min	P7 B
RC6	20 min	P8 B



*See EN1627 - Note, only RC5 and RC6 is tested as a whole
 **See EN1630 for Tool set specification
 ***See EN356 - Note, test method for A and B is very different

Ekspllosivsikring – Døre og vinduer

Sikrings-klasse*	Test kriterier	Sikringsklasse på glasset** (test feltstørrelse 90x110cm)
EPR1	50 KPa / 370 kPa-msec	ER1
EPR2	100 KPa / 900 kPa-msec	ER2
EPR3	150 KPa / 1500 kPa-msec	ER3
EPR4	200 KPa / 2200 kPa-msec	ER4



*jf. EN13123 - Alle sikringsklasser fås som splint (S) eller splintfri (NS)
 **jf. EN13541 - Alle sikringsklasser fås som splint (S) eller splintfri (NS)

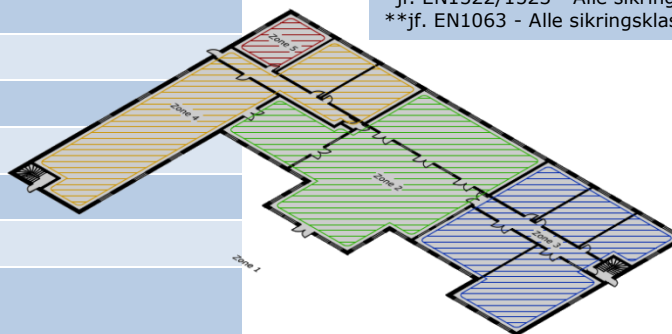
Skudsikring – Døre og vinduer

Sikrings-klasse*	Beskyttelse (kaliber/våben)	Sikringsklasse på glasset**
FB1	.22 LR	BR1
FB2	9mm Parabellum	BR2
FB3	.357 Magnum	BR3
FB4	.44 Magnum	BR4
FB5	5.56x45 NATO	BR5
FB6	7.62x51 NATO	BR6
FB7	7.62x51 NATO AP	BR7

*jf. EN1522/1523 - Alle sikringsklasser fås som splint (S) eller splintfri (NS)
 **jf. EN1063 - Alle sikringsklasser fås som splint (S) eller splintfri (NS)

Indbrudssikring – Døre og vinduer

Sikrings-klasse*	Tidgrænse**	Sikringsklasse på glasset***
RC1 N	-	Ingen krav
RC2 N	3 min	Ingen krav
RC2	3 min	P4 A
RC3	5 min	P5 A
RC4	10 min	P6 B
RC5	15 min	P7 B
RC6	20 min	P8 B



*jf. EN1627 - Note, er kun RC5 og RC6 testet som helhed
 **Se EN1630 for værktøjs sæt specifikationer
 ***jf. EN356 - Note, testmetoden for A og B er meget forskellig