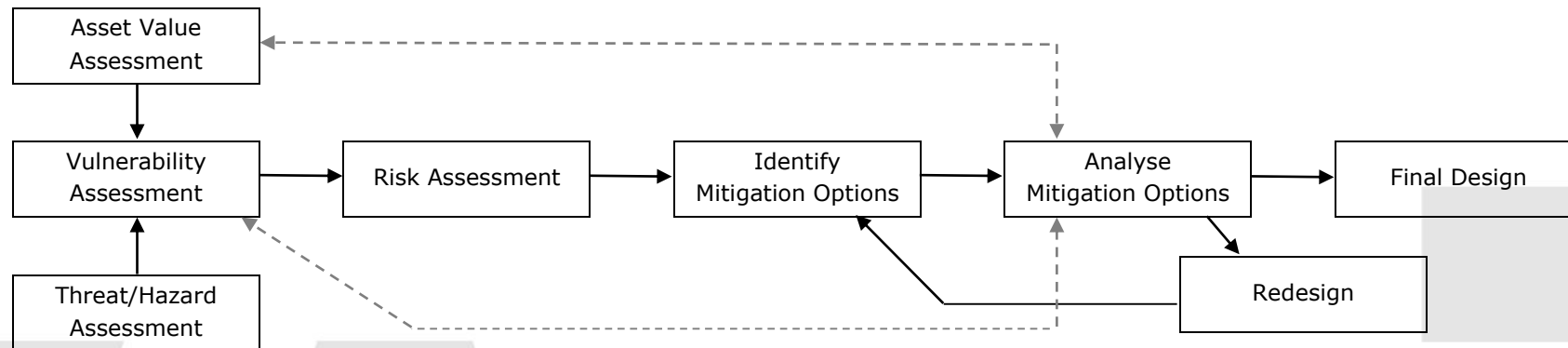
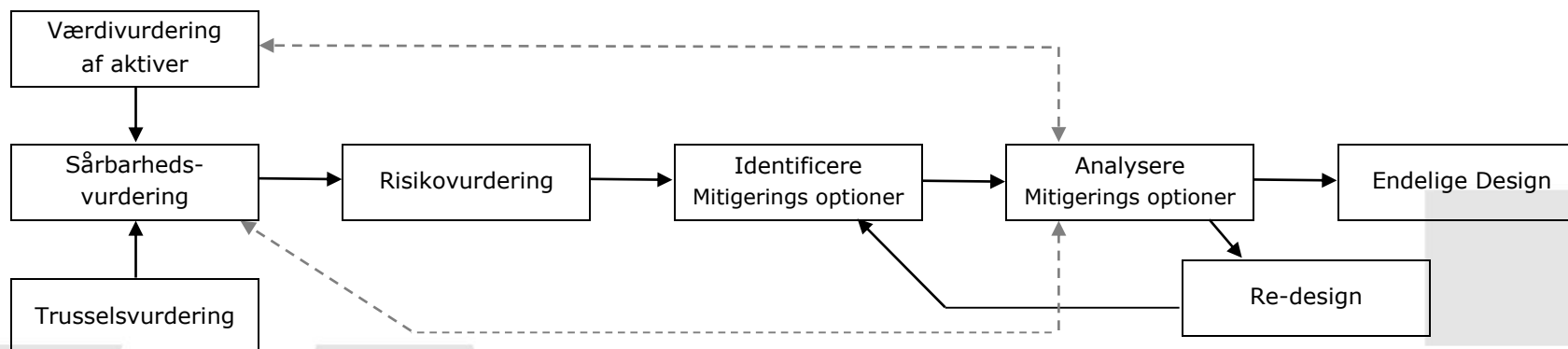


Physical security consultancy, work methodology



- Identifying the value of the building's assets that needs to be protected and conducting a threat assessment wherein the threat/hazard is identified, defined and quantified
- This provides the information needed for the vulnerability assessment, which evaluates the potential vulnerability of critical assets to the variety of identified threats/hazards
- The vulnerability assessment provides a basis for determining mitigation measures for protection and is the bridge in the methodology between threat/hazard, asset value, and the resultant level of risk
- The risk assessment analyses the threat, asset value, and vulnerability to ascertain the level of risk for each critical asset, against each applicable threat. The likelihood or probability and consequences analysis of the threat occurring is also conducted
- When identifying and analysing mitigation options several things need to be considered and integrated in the final designs. Thus as, building code, regulations and functional needs etc. Furthermore, it is of most important to consider all mitigation options as a whole to ensure that they are complementing each other, instead of the opposite
- Designing new physical security or upgrading existing measures is often a combination of off the shelf solutions/products that complies with common security standards and custom-made designs that is developed for the particular situation

Fysisk sikkerhedsrådgivning, arbejdsmetodologi



- Identificere værdien af de bygningsaktiver der skal beskyttes og udarbejde en trusselsvurdering, hvor truslen er identificeret, defineret og kvantificeret
- Dette giver de nødvendige oplysninger til sårbarhedsvurdering, som vurderer den potentielle sårbarhed af kritiske aktiver for hver identificeret trussel
- Sårbarhedsvurderingen er grundlaget for fastsættelsen af mitigerende foranstaltninger for beskyttelsen, og er bindeleddet i metoden mellem trussel, den indre værdi og det deraf følgende risikoniveau
- Risikovurderingen analyserer truslen, den indre værdi, og sårbarhed for at fastslå risikoniveauet for hvert kritisk aktiv mod hver relevant trussel. Der udføres ligeledes en vurdering af sandsynlighed og en konsekvensanalyse for truslen
- Når man identificerer og analyserer på mitigeringsmulighederne, er der flere ting, som skal overvejes og integreres i det endelige design. Herunder, bygningsreglementer, lovgivning og funktionelle behov mv. Endvidere er vigtigt at overveje mitigeringsmulighederne som en helhed for at sikre, at de komplementerer hinanden, frem for det modsatte
- Design af nye fysiske sikkerhed løsninger eller opgradering af eksisterende foranstaltninger er ofte en kombination af hyldevare løsninger / -produkter, der overholder sikkerhedsstandarder og skræddersyede designs som udvikles særligt til situationen